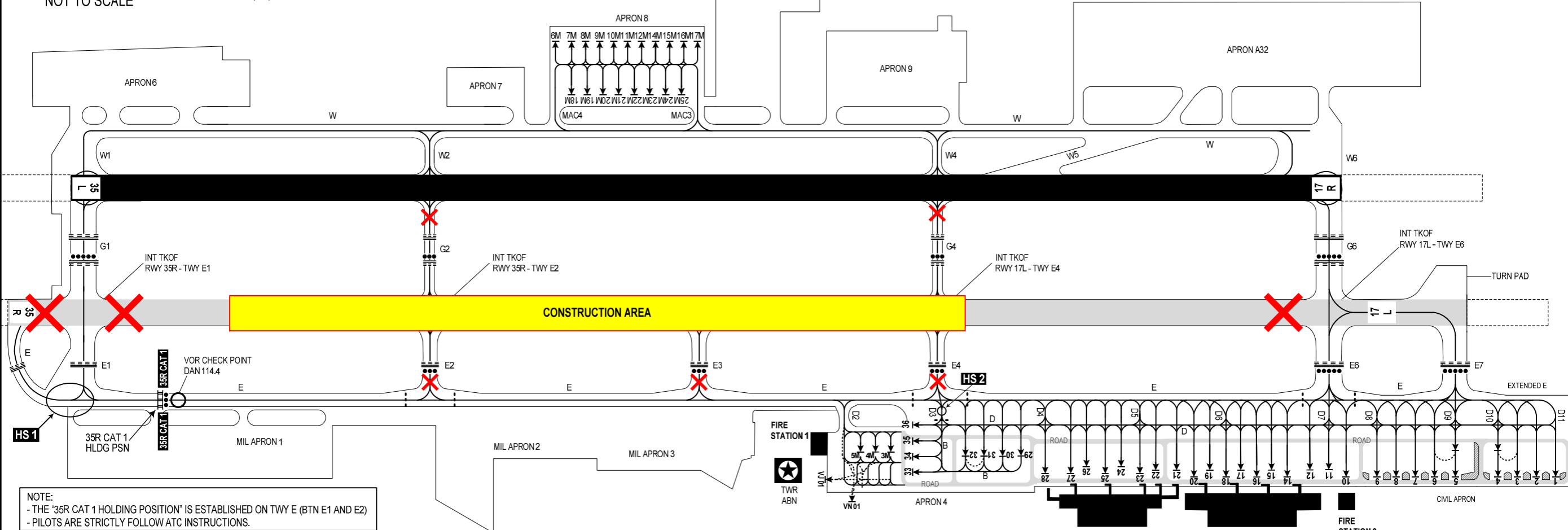


VAR 1°W 2016  
N  
NOT TO SCALE

**TWYS WIDTH:**  
- G2, G4, W, W2, W4, W5, E, EXTENDED E = 23 M.  
- E2, E3, E4, E7 = 31 M.  
- E1 = 57 M.  
- W1 = 60 M.  
- W6 = 152 M.  
- G1, G6, E6 = 61 M.

**TWYS BEARING STRENGTH:**  
- G2, G4: PCN 46/F/B/X/U, BITUMINOUS CONCRETE  
- E1, E2, E3, E4, E6, E7: PCN 56/R/A/W/T, CEMENT CONCRETE  
- E: PCN 56/R/A/X/T, CEMENT CONCRETE  
- W, G1, G6, W1, W2, W4, W5, W6: PCN 46/R/B/X/U, CEMENT CONCRETE  
- EXTENDED E: PCN 65/R/A/W/T, CEMENT CONCRETE

**APRON BEARING STRENGTH:**  
- STANDS 1, 2, 3, 4, 10, 11, 12, 14, 15, 16, 17, 18, 19, 20, 21, 22: PCN 65/R/A/W/T.  
- STANDS 5, 6, 7, 8, 9: PCN 56/R/A/W/T.  
- STANDS 23, 24, 25, 26, 27: PCN 67/R/B/W/T.  
- STANDS 28, 29, 30, 31, 32, 33, 34, 35, 36: PCN 65/R/A/X/T.  
- STANDS 3M, 4M, 5M: PCN 28/R/B/W/T.  
ALL ARE CEMENT CONCRETE



**NOTE:**  
- THE "35R CAT 1 HOLDING POSITION" IS ESTABLISHED ON TWY E (BTN E1 AND E2)  
- PILOTS ARE STRICTLY FOLLOW ATC INSTRUCTIONS.

**\* CONSTRUCTION AREA:**  
- REPAIRING CEMENT CONCRETE SLABS ON RWY 35R/17L (APPROXIMATELY 366 M TO THE NORTH OF TWY CL E1 AND APPROXIMATELY 933 M TO THE SOUTH OF TWY CL E6)  
**\* CONSTRUCTION AREAS ARE SURROUNDED BY FENCES, MARKER BOARDS, WARNING LIGHTS, MARKINGS AS SPECIFIED.**  
**\* TEMPORARILY SUSPENDED AREAS:**  
- RWY 35R/17L FOR TAKE-OFF/LANDING AIRCRAFT, EXCEPT FOR THE INTERSECTION WITH TWYS E1, G1 AND THE INTERSECTION WITH TWYS E6, G6 WHICH ARE REMAIN AVAILABLE FOR AIRCRAFT AND VEHICLE MOVEMENT.  
- TWYS E2, E3, E4, G2, G4.  
- SHUT DOWN ILS OF RWY 35R; APPROACH LIGHTING SYSTEM, PAPI LIGHTING, RWY 35R/17L LIGHTING.  
**\* TWYS G2 AND G4 SHALL CONTINUE TO BE TEMPORARILY SUSPENDED. THE ESTIMATED TIME TO BE PUT INTO OPERATION: FROM 1001 ON 28 DEC 2024 (UTC).**  
**\* ALL AIRCRAFT SHALL NOT BE ALLOWED TO OPERATE ON TWY W WHEN CIVIL AVIATION AIRCRAFT ARE APPROACHING TO LAND OR IN THE PROCESS OF TAKING-OFF FROM RWY 35L/17R.**  
**\* ACFT OPERATIONAL PROCEDURES: REFER TO TEXTUAL SECTION FOR ACFT TAXIING PROCEDURES.**  
**\* PILOT FOLLOW ATC INSTRUCTIONS STRICTLY.**

LEGEND	
BUILDINGS	■
VOR CHECK POINT AND FREQUENCY	○ DAN 114.4
HOT SPOT AND NAME	○ ← HS1
ACFT STAND	→ 1
TAXILANE MARKING (CONDITIONAL)	.....
RWY-HOLDING POSITION (PATTERN A)	≡≡≡
RWY-HOLDING POSITION (PATTERN B)	≡≡≡
INTERMEDIATE HOLDING POSITION	-----
STOP BAR	●●●
SERVICE ROAD	ROAD
VEHICLES AREA	▨
ARP	⊕
CLOSED	×

CHANGE: CONSTRUCTION AREA.