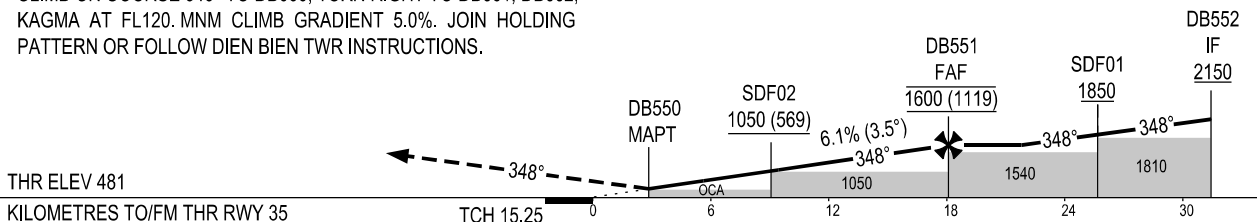


KILOMETRES TO NEXT WPT	DB550 (MAPT)	0	1	3	5	7	9	11	13	15.2
ALT		670	730	855	975	1095	1220	1340	1465	1600

MISSED APPROACH:
CLIMB ON COURSE 348° TO DB660, TURN RIGHT TO DB661, DB662, KAGMA AT FL120. MNM CLIMB GRADIENT 5.0%. JOIN HOLDING PATTERN OR FOLLOW DIEN BIEN TWR INSTRUCTIONS.

TRANSITION ALTITUDE 2750



OCA (H)	MACG	A	B	C
LNAV	5.0%	670 (189)		
CIRCLING		NOT APPLICABLE		

GS	km/h	150	200	250	300	350
ROD FAF - MAPT	m/s	2.5	3.4	4.2	5.1	5.9

NOTE: MNM CLIMB GRADIENT 2.5% NOT APPLICABLE.

SEE THE NEXT PAGES FOR CODING DATA.

CHANGE: NEW CHART.